

# 99% of Aledade's member CHCs EARNED SHARED SAVINGS



For their 2022 MSSP performance



As the largest network of independent primary care in the country, Aledade's model is creating a better experience for patients while lowering overall cost.

In the 2022 Medicare Shared Savings Program (MSSP) performance year alone, Aledade member community health centers (CHCs)\*:

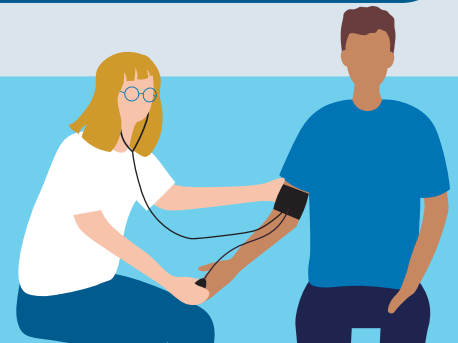


## Decreased 12% and 7%

of hospitalizations and emergency department visits per 1,000, respectively.

## Controlled 62.5%

of attributed MSSP patients with hypertension through timely blood pressure management.



## Earned >\$376K

in average shared savings payments.

The time to discover a better business model and set up your health center for PY2025 success with Aledade is now. Discover how you can deliver more proactive, preventive and primary care while lowering overall cost of care:

[https://info.aledade.com/2022\\_results\\_chc\\_info](https://info.aledade.com/2022_results_chc_info)