

2022 Aledade member practices SURPASSED MSSP BENCHMARKS

For the **third**
year in a row



As the largest network of independent primary care in the country, Aledade's model is creating a better experience for patients while lowering overall cost.

In the 2022 Medicare Shared Savings Program (MSSP) performance year alone, Aledade member practices*:

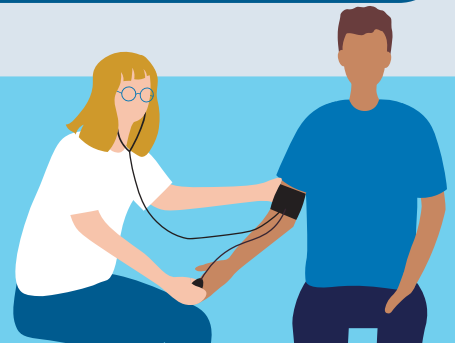


Delivered >445K

Annual Wellness Visits. That's an average of 759 per 1,000 compared to the national average of 527 per 1,000.

Controlled 73.2%

of attributed MSSP patients with hypertension through timely blood pressure management.



Earned >\$216K

in average shared savings payments.

The time to discover a better business model and set up your practice for PY2025 success with Aledade is now. Discover how you can deliver more proactive, preventive and primary care while lowering overall cost of care:

https://info.aledade.com/2022_results_pcp_info